

# Welcome

## to the Jim Kress Maritime Lighthouse Tower!



**The Door County Maritime Museum is expanding our Sturgeon Bay facility with the Jim Kress Maritime Lighthouse Tower.**

- ⚙️ Ten floors of interactive educational exhibits that highlight maritime history, people and industries;
- ⚙️ Accessibility to a lighthouse experience that will accommodate everyone regardless of physical abilities;
- ⚙️ A must-see maritime experience that will draw visitors to our area from across the country;
- ⚙️ An intriguing destination that will create a significant economic boost to the region;
- ⚙️ Hands-on educational experiences that will teach young and old, keep maritime history alive and promote interest in maritime-related local career opportunities.



920.743.5958

[dcmm.org](http://dcmm.org)

[info@dcmm.org](mailto:info@dcmm.org)

[#dcmaritime](https://twitter.com/dcmaritime)

# A Glimpse Inside

- The Jim Kress Maritime Lighthouse Tower visitor experience will begin in the first floor Theater.
- Guests will then take the elevator to the top and make their way down through each floor of exhibits.
- The educational, interactive exhibit themes for each floor in the Maritime Lighthouse Tower include:



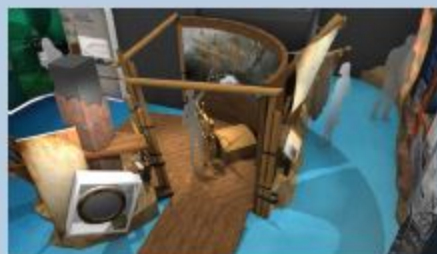
## 1ST FLOOR THEATER

Welcome to the Door Peninsula—a place of breathtaking beauty and rich history. Explore the ways water has defined the people, history and development of this region.



## 2ND FLOOR SHIPWRECKS OF DOOR COUNTY

Shipwrecks are wood and steel chronicles that reveal clues about history, maritime engineering and commerce, and the triumphs and tragedies of life on the water.



## 3RD FLOOR LIFE UNDERWATER

The evolution and role of commercial and recreational fishing, and the various species in the waters of Door County. We are all part of a complex, diverse web of life.



## 4TH FLOOR RECREATIONAL BOATING

From small craft to luxury yachts, since the 1920s recreational boating has defined leisure and tourism on the Door Peninsula.



## 5TH FLOOR SHIPBUILDING

People from maritime cultures settled Wisconsin's shores and shaped the region's shipbuilding legacy, from the earliest wooden boats to state-of-the-art warships to world-renowned recreational watercraft.



## 10TH & 11TH FLOORS OUR WORKING WATERFRONT

Sturgeon Bay's development reflects the county's connection to the world via the Great Lakes. The 11th floor Baumgartner outdoor observation deck will be seasonally available.



## 9TH FLOOR OUR MARITIME ENVIRONMENT

Across time, the Door Peninsula has been defined by water, ice and wind. The result is an ever-changing, beautiful landscape that is home to a diverse array of life.



## 8TH FLOOR MARITIME PEOPLE

From Native Americans and early settlers, to today's tourist economy, people have lived on and off the waters that surround the Door Peninsula for millennia.



## 7TH FLOOR MARITIME NAVIGATION

Modern navigation is built on ancient knowledge, advances in tools and technology, and the work of adventurers and cartographers who charted the world.



## 6TH FLOOR MARITIME COMMERCE

The Sturgeon Bay Shipping Canal connects the Bay of Green Bay to Lake Michigan, and opened in 1890. Door County today is built on the region's rich natural resources and its connection to the wider world via the Great Lakes.



The 1st floor theater, Baumgartner rooftop observation deck, 10th floor Working Waterfront exhibit and the newly expanded Museum Shop are now open to visitors!  
The remaining exhibits will open in October 2021 (floors 2,3,5,7) and May 2022 (floors 4,6,8,9).



When completed, the Jim Kress Maritime Lighthouse Tower will enable the Door County Maritime Museum to better and more effectively share the important maritime culture and heritage of our community with a wider audience, making our unique part of American history come alive for visitors.

More than 400 individual, family, corporate and foundation donors have contributed a total of \$5.8 Million to the Jim Kress Maritime Lighthouse Tower \$7.2 Million construction capital campaign. This includes \$1 Million from the George F. Kress Foundation and a \$250,000 Community Development Investment grant from the State of Wisconsin's Economic Development Corporation.

We have a construction fundraising gap of \$1.4 Million, and we are asking for your help to close the difference. The original goal of the Maritime Lighthouse Tower Capital Campaign was \$5.5 Million. Due to a number of circumstances, the cost of construction has changed significantly.

Included in the changes to the scope of the Maritime Lighthouse Tower project has been a major upgrade to the HVAC systems installed. The new system chosen will ultimately lead the Door County Maritime Museum to apply for accreditation from the American Alliance of Museum and the Smithsonian Institution, providing access to artifact loans from America's most respected and comprehensive museum collections.

**To discuss a pledge of support for the Maritime Lighthouse Tower, please contact Sam Perlman, Deputy Director and Development Manager [sperlman@dcm.org](mailto:sperlman@dcm.org) or (920) 743-5958 x103.**



*Thank you*

**for your consideration.**